



# Salisbury Regional Airport (SBY)



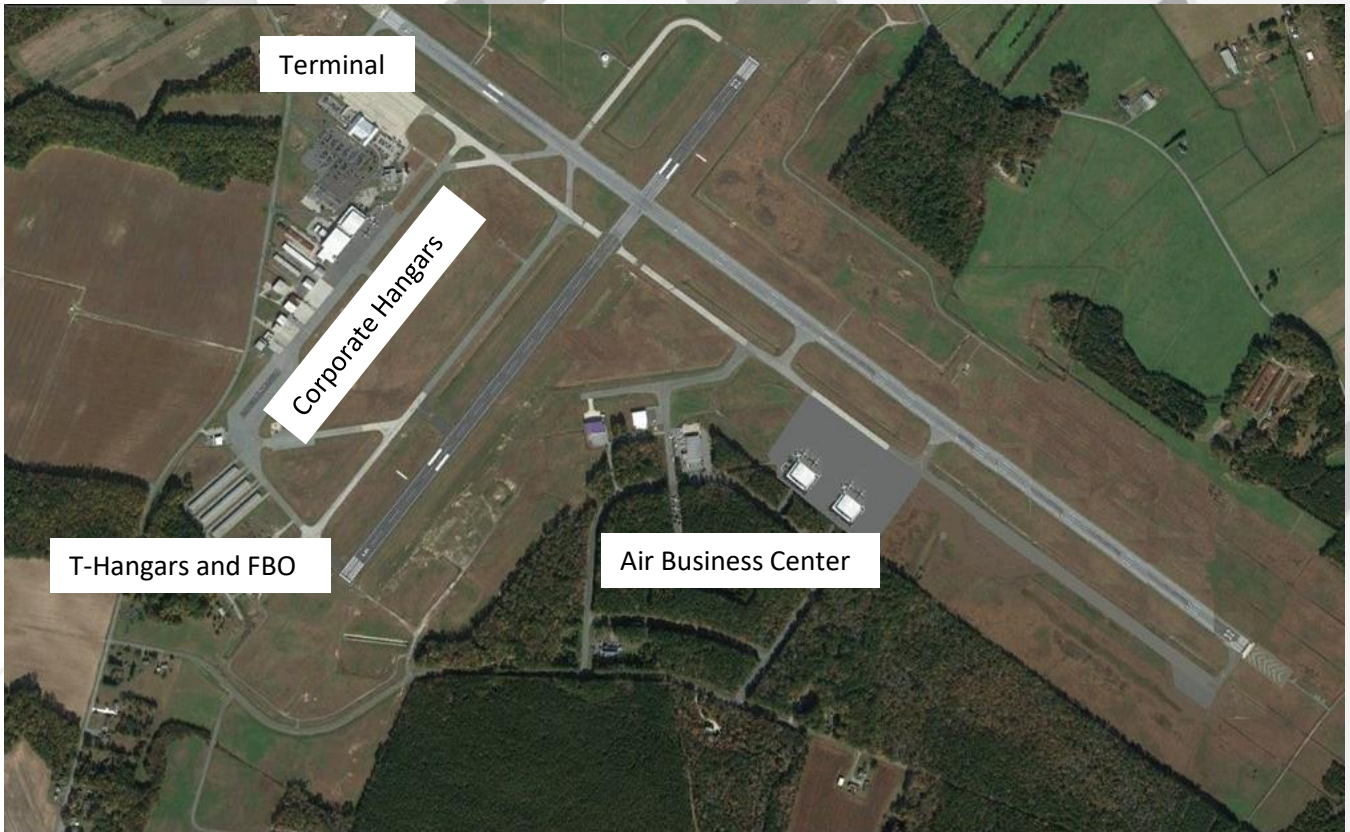
## Business & Development Opportunities

- Prime Development Parcels
- Mass Advertising Reach
- Low Rental Rates
- Own or Lease





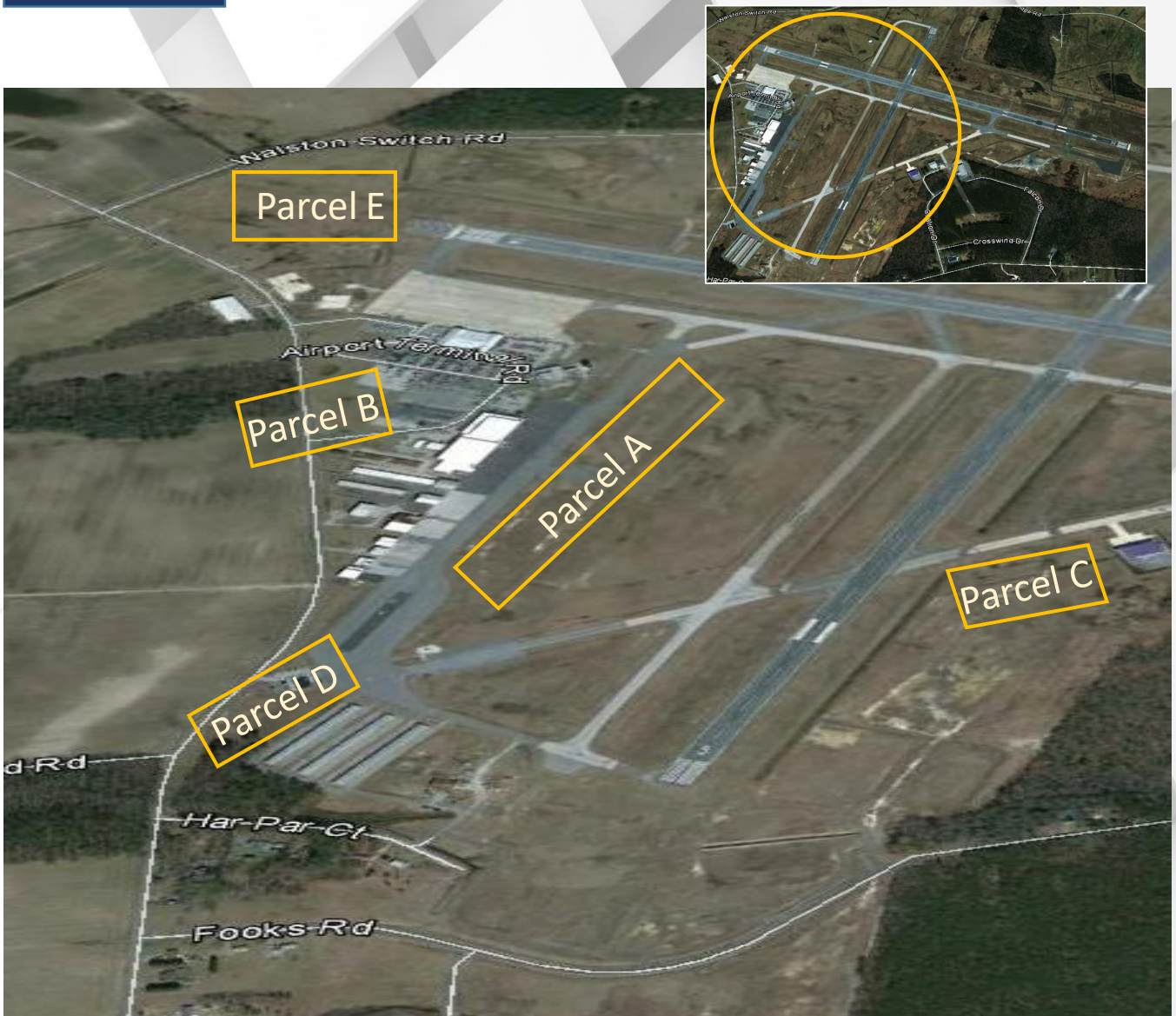
## Airfield Overview



- Maryland's second largest airport
- Enterprise Zone: Real Property & State Income Tax Credits
- Scheduled airline service provided by American Airlines
- Runway length: 6,400' (planned extension to 8,000')
- Nearly 125,000 passengers annually
- Service to Philadelphia & Charlotte
- 150 acre Air Business Park
- Hertz, Avis and Enterprise Rental Car



# Development Opportunities



- Parcel A,B: Large scale hangar complex
- Parcel C- Corporate hangars
- Parcel D- T-Hangars
- Parcel E – Solar Farm

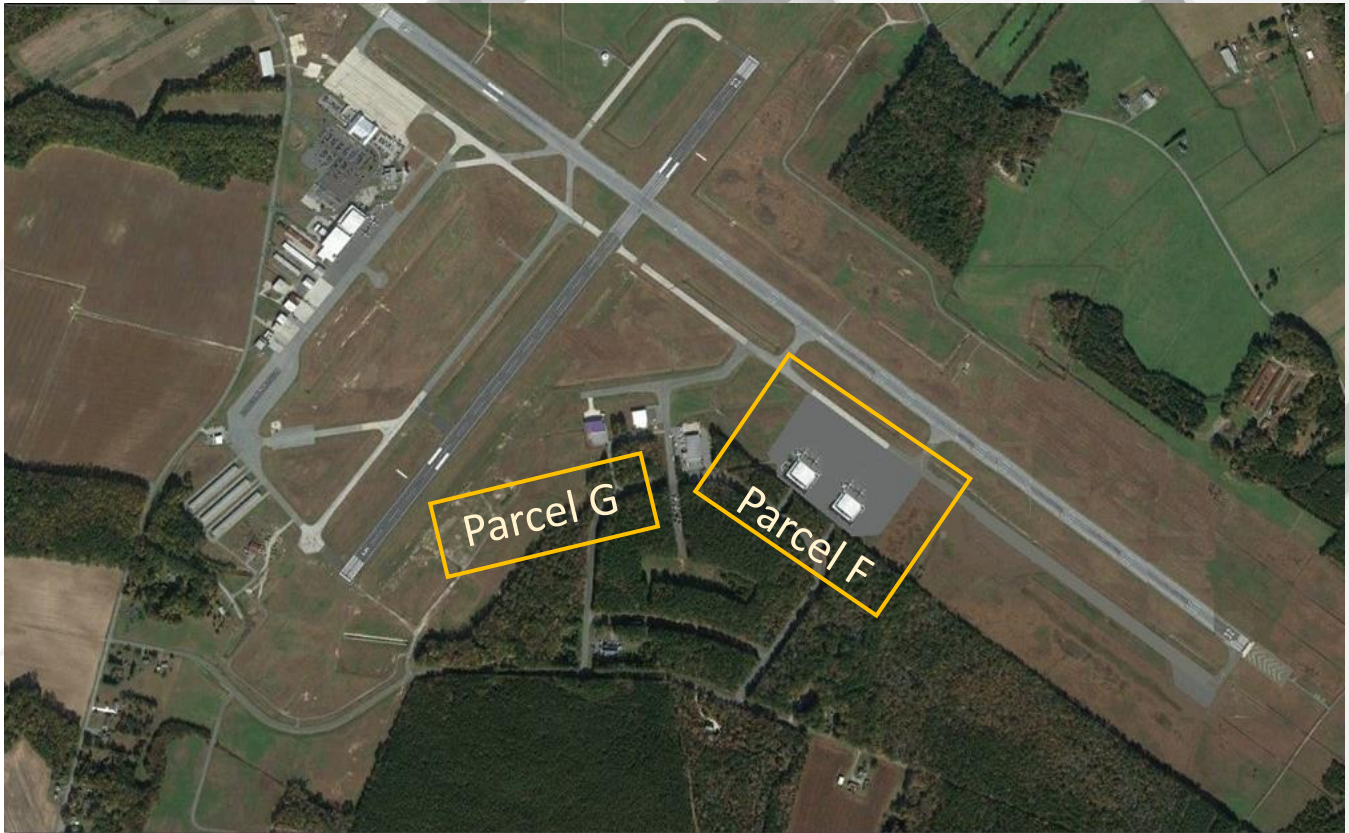


# Development Opportunities





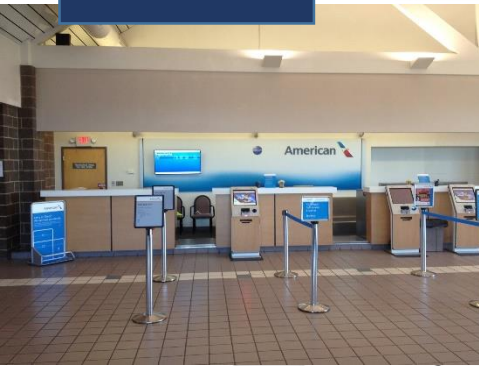
# Development Opportunities



- Parcel F- To be built, large scale hangar complex; Logistics Center &
- Parcel G- Drone Center for Excellence



# Inside Terminal Opportunities



- Reach over 125,000 people annually through our display advertising program
- Feature your company and products in our display case
- Establish an office, café or small business inside the terminal building

## Contact Information



Dawn Veatch  
Airport Manager  
410-548-4827

[dveatch@wicomicoounty.org](mailto:dveatch@wicomicoounty.org)



David Ryan  
Executive Director  
410-749-1251  
[info@swed.org](mailto:info@swed.org)