



MAIN STREET IMPROVEMENTS

Water, Sewer, Stormwater and Streetscape Improvements



Presentation
July 23, 2014



A. Morton Thomas and Associates, Inc.
800 King Farm Boulevard, 4th Floor
Rockville, Maryland 20850

Working with the City to design and prepare construction documents for Main Street Improvements

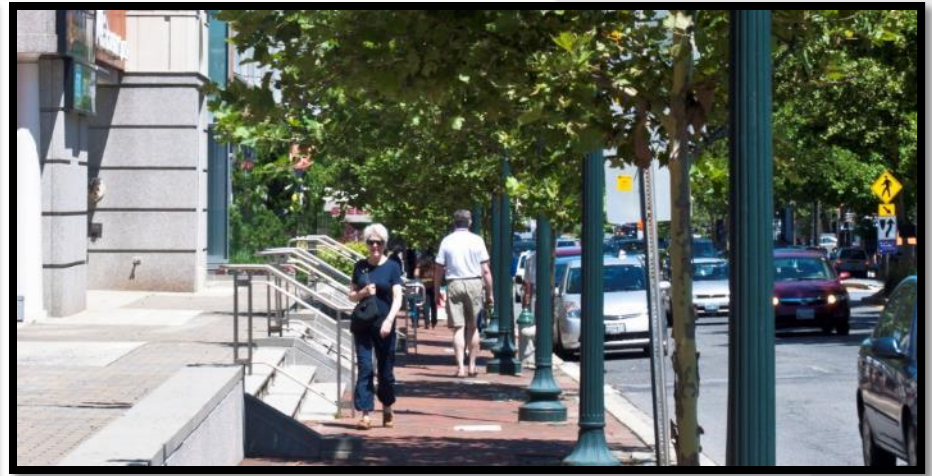
A. Morton Thomas and Associates, Inc.

**Geo-Technology
Associates, Inc.**

Goel Services

- Extensive experience with streetscape projects
- Extensive urban design experience
- Full-service design team
- Recent experience with City of Salisbury

The AMT Team Experience



Project Vision

Return Vibrancy

Create a Destination

Link Marina & Central Greenway

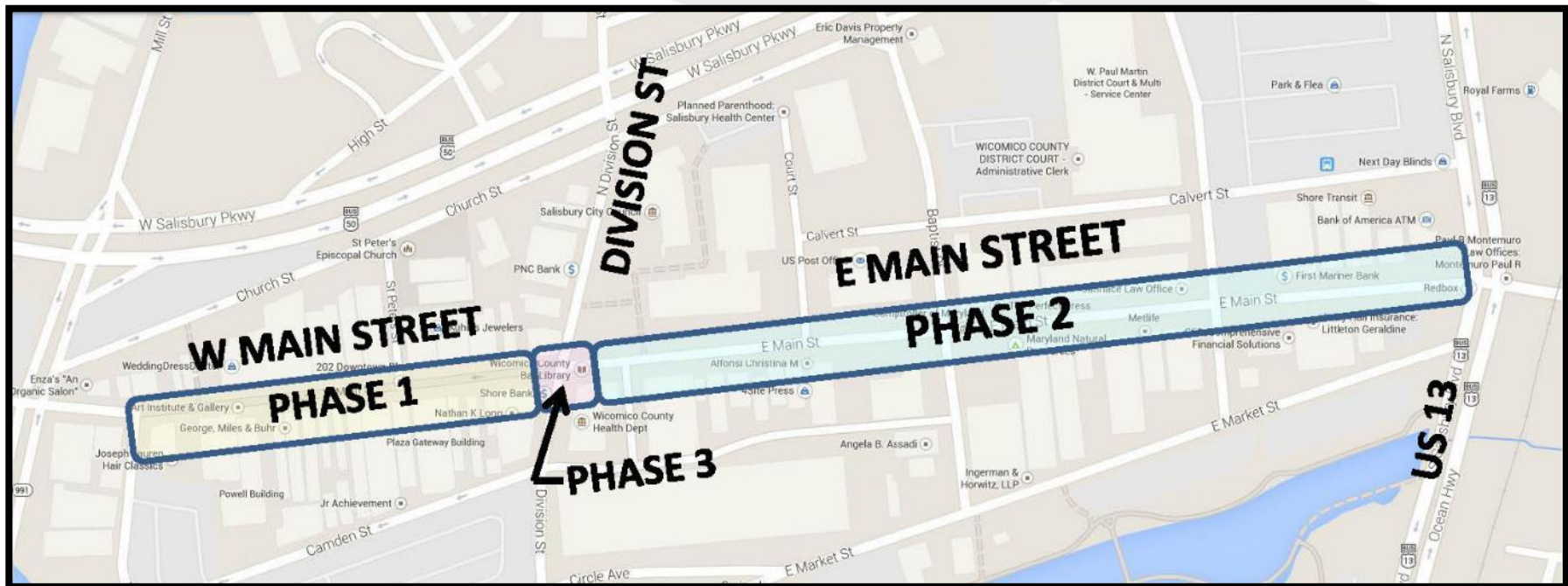
Enhance Architecture

Timeless, Memorable, & Inviting

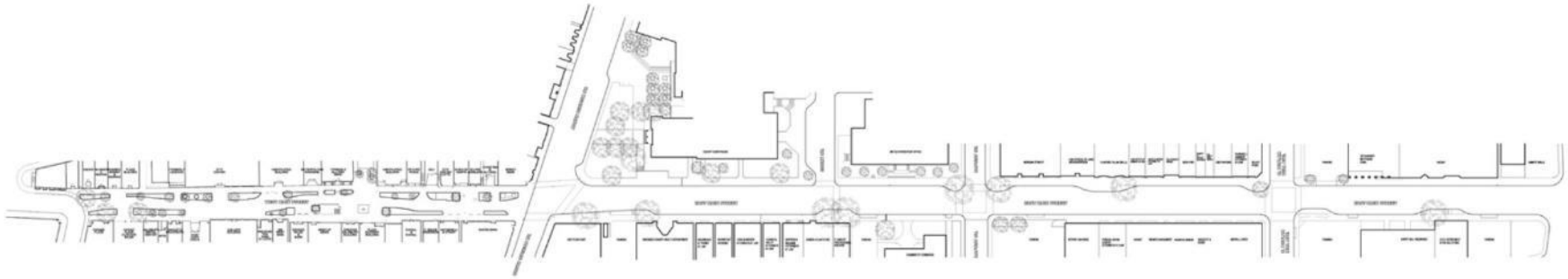
Create Continuity, Safety, & Parking

Project Goals

- Revitalize the Main Street corridor
- Create inviting, safe environment
- Provide access for pedestrians, bikes and vehicles
- Create a link between downtown and marina



Project Masterplan – Project Limits



Existing Conditions



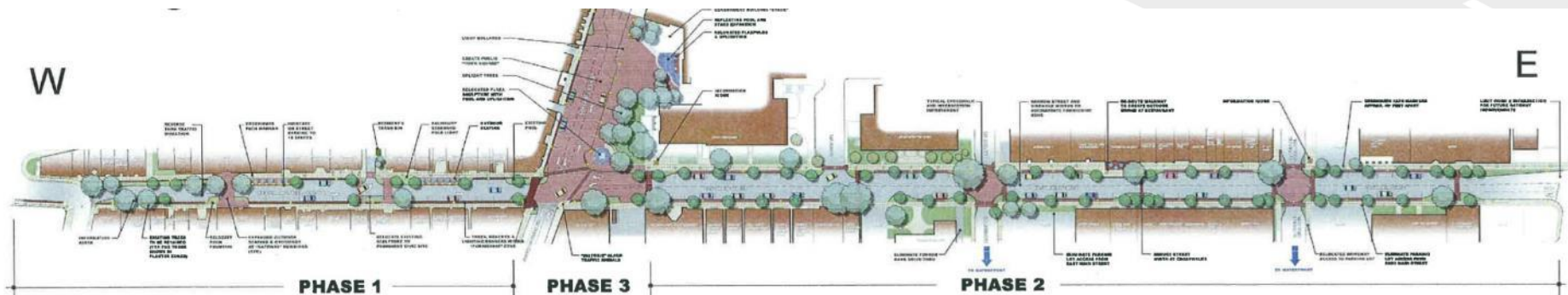
Proposed Concept

**Downtown Salisbury Improvements
Main Street Masterplan
April 2009**

**URBAN
Salisbury
INC.**
© 2009

Project Overview

- Replace or improve:
 - *water mains*
 - *sewer mains and*
 - *storm drain structures*
- Design innovative SWM treatments
- Upgrade traffic control at Division St.
- Streetscape / landscape features
- Pavement repairs and replacement
- Reconstruct sidewalk and ramps



\$1.3 million

\$1.8 million

\$1.9 million

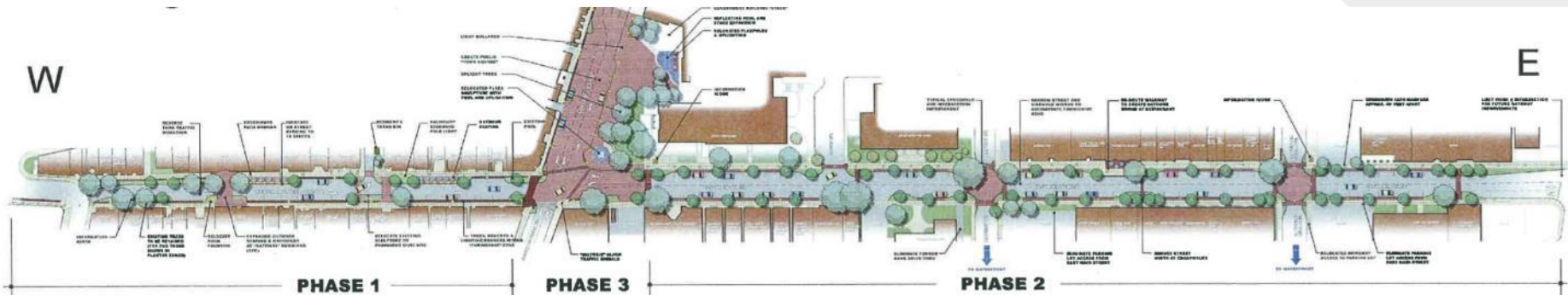
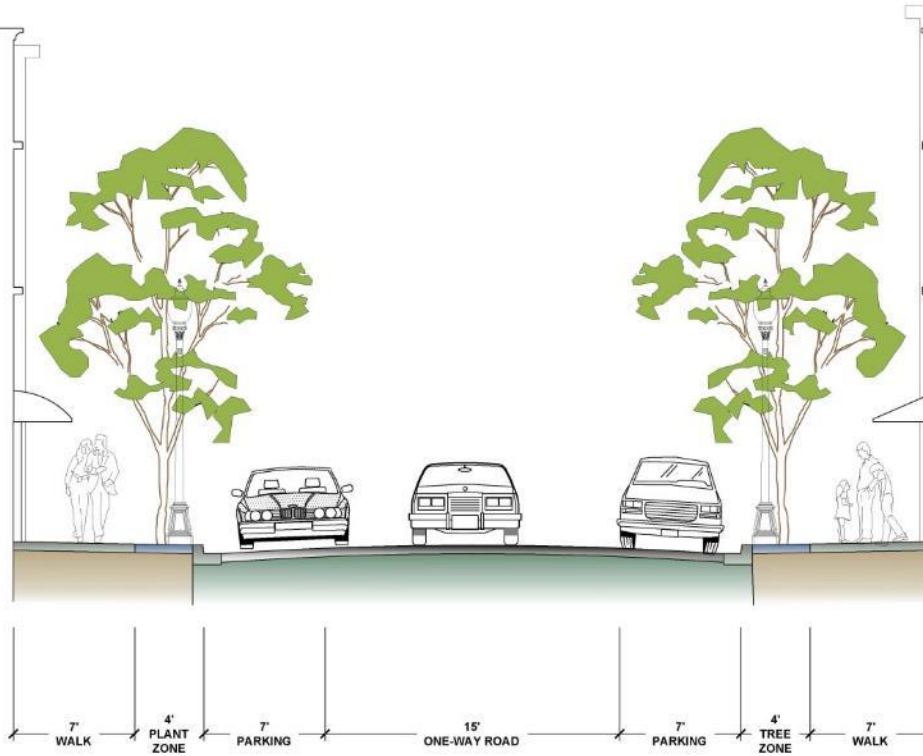
Multi Use Corridor

Corridor to include:

- *travel lanes*
- *bike lanes/ striping*
- *sidewalk*
- *on-street parking*
- *landscape features*

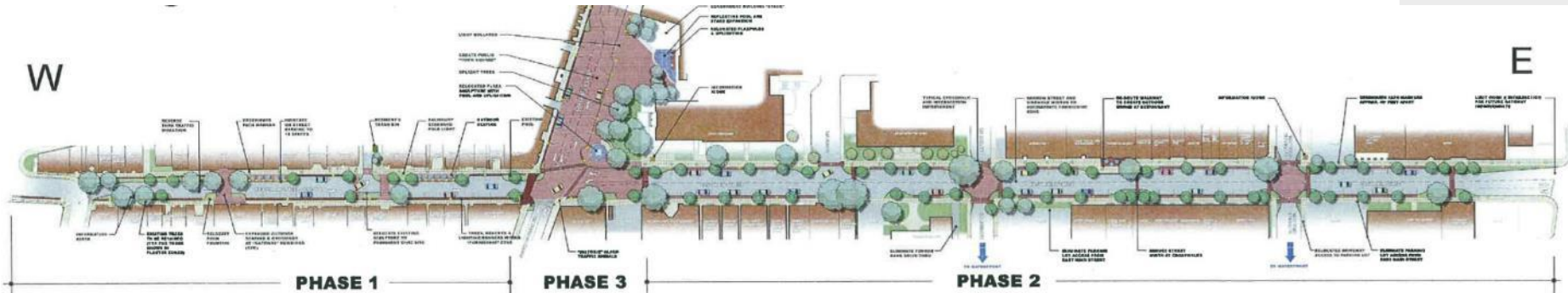
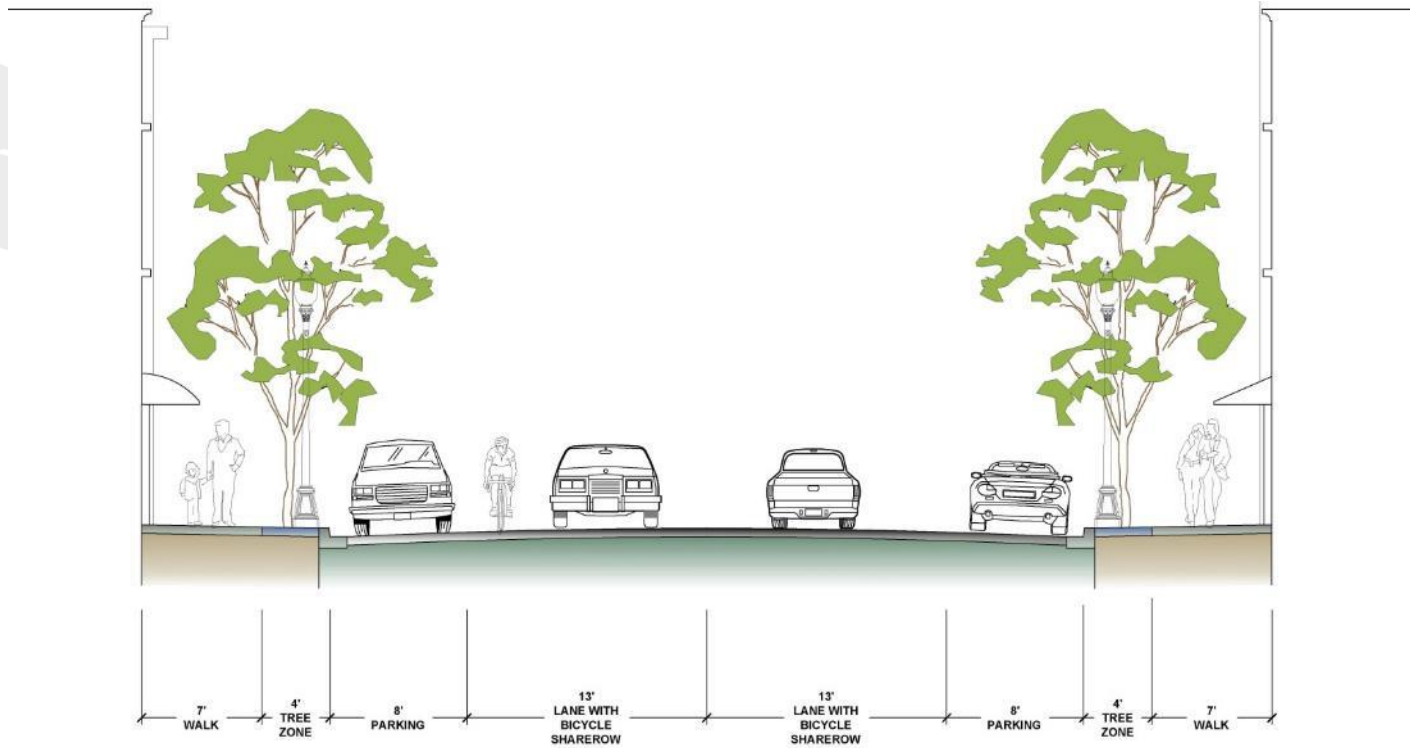


Multi Use Corridor “West Main Street”

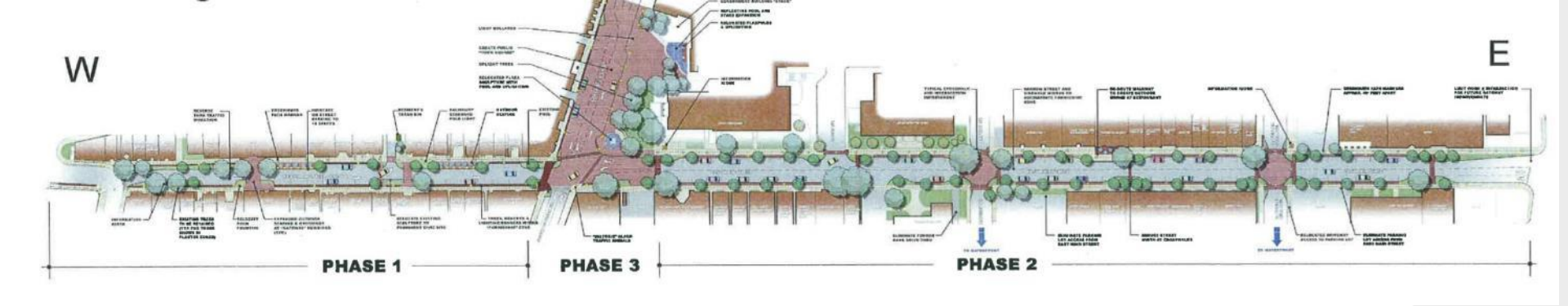




Multi Use Corridor “East Main Street”



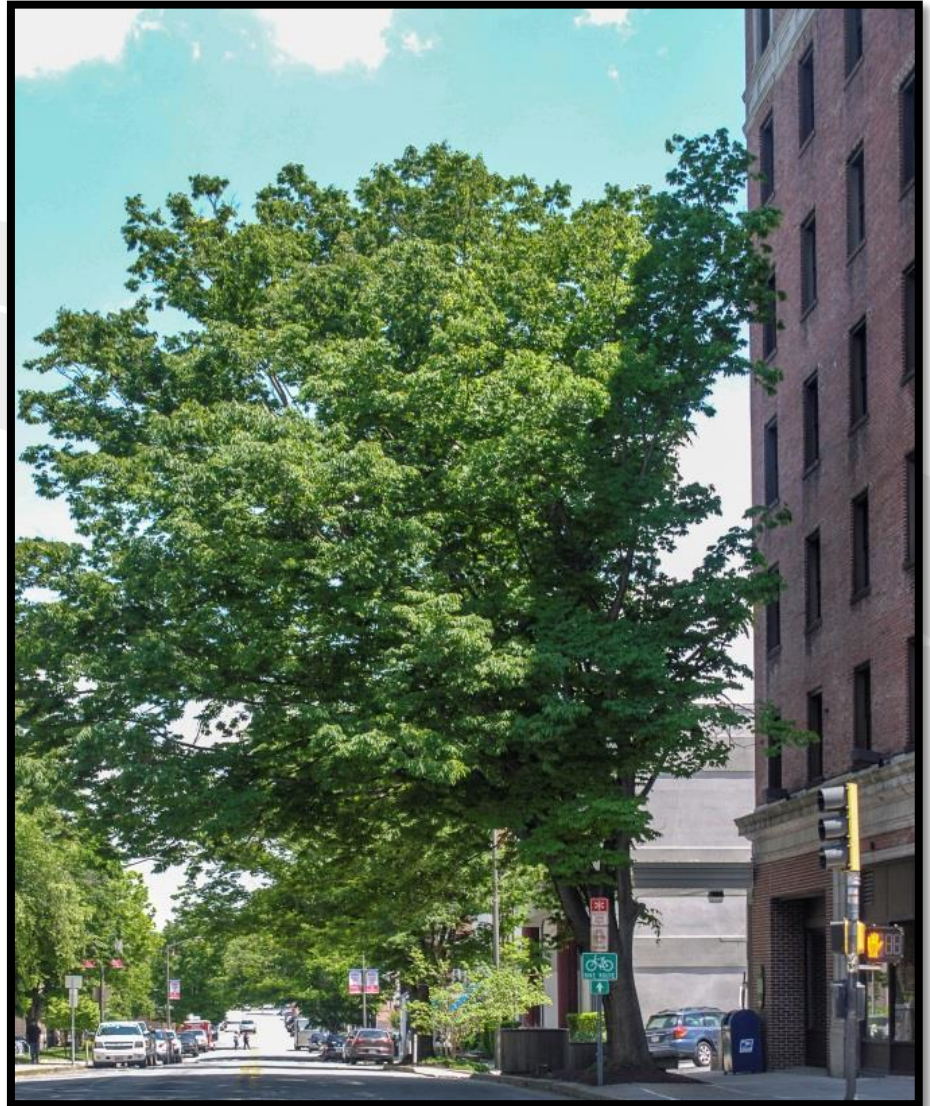
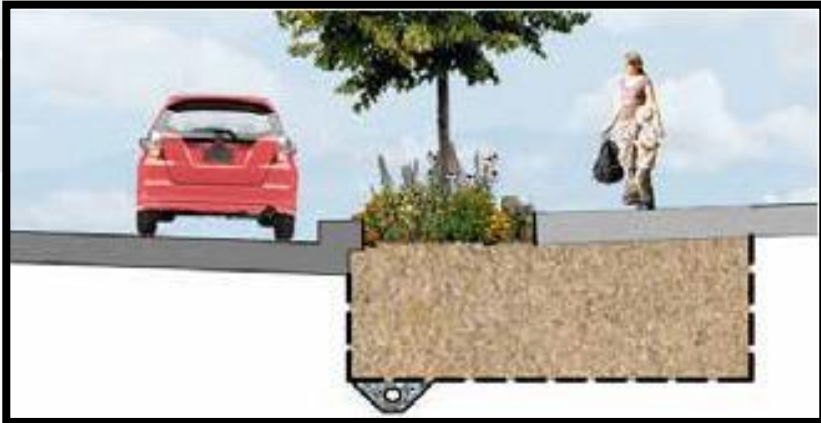




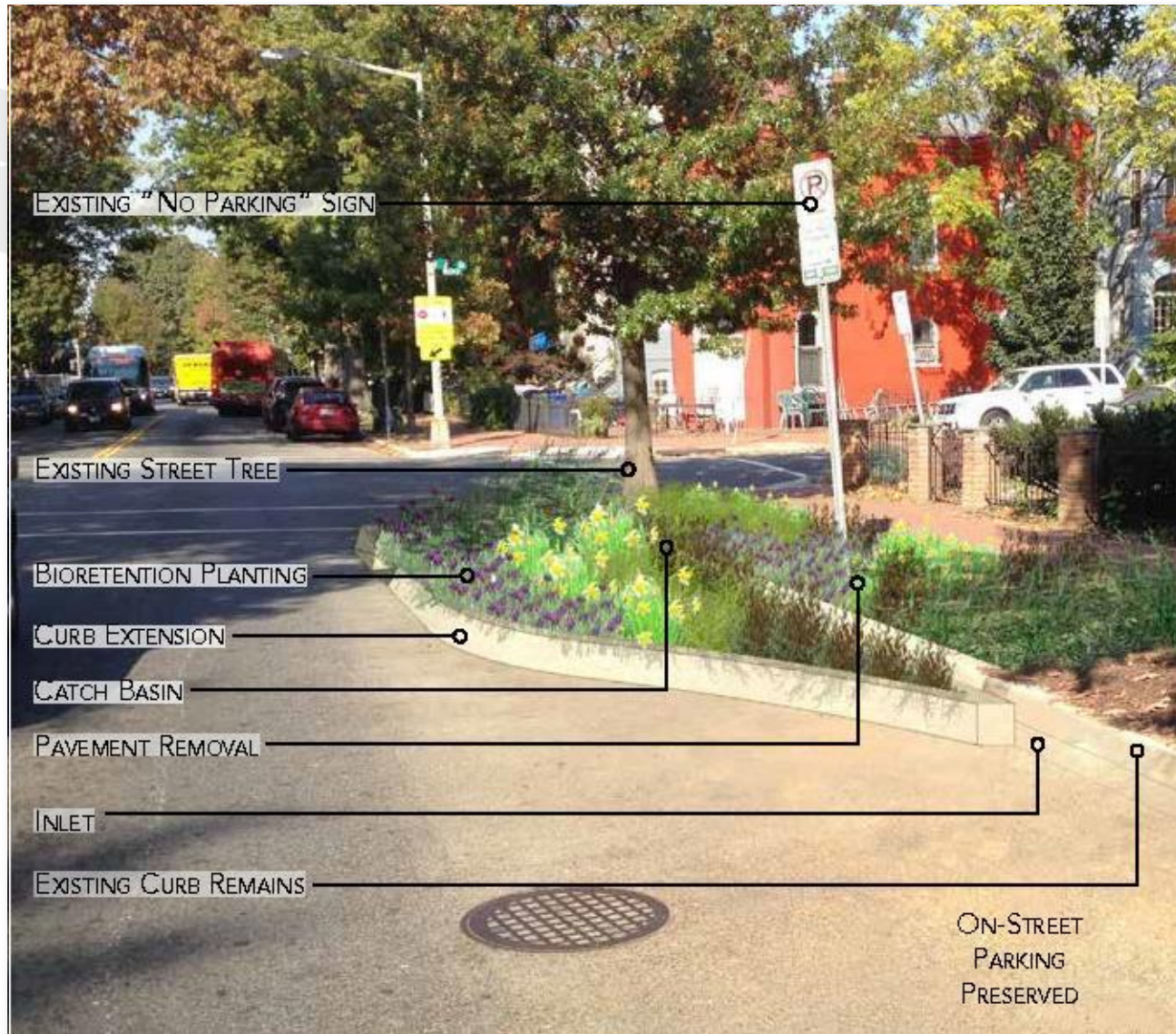
Multi Use Corridor “Walkable Street”



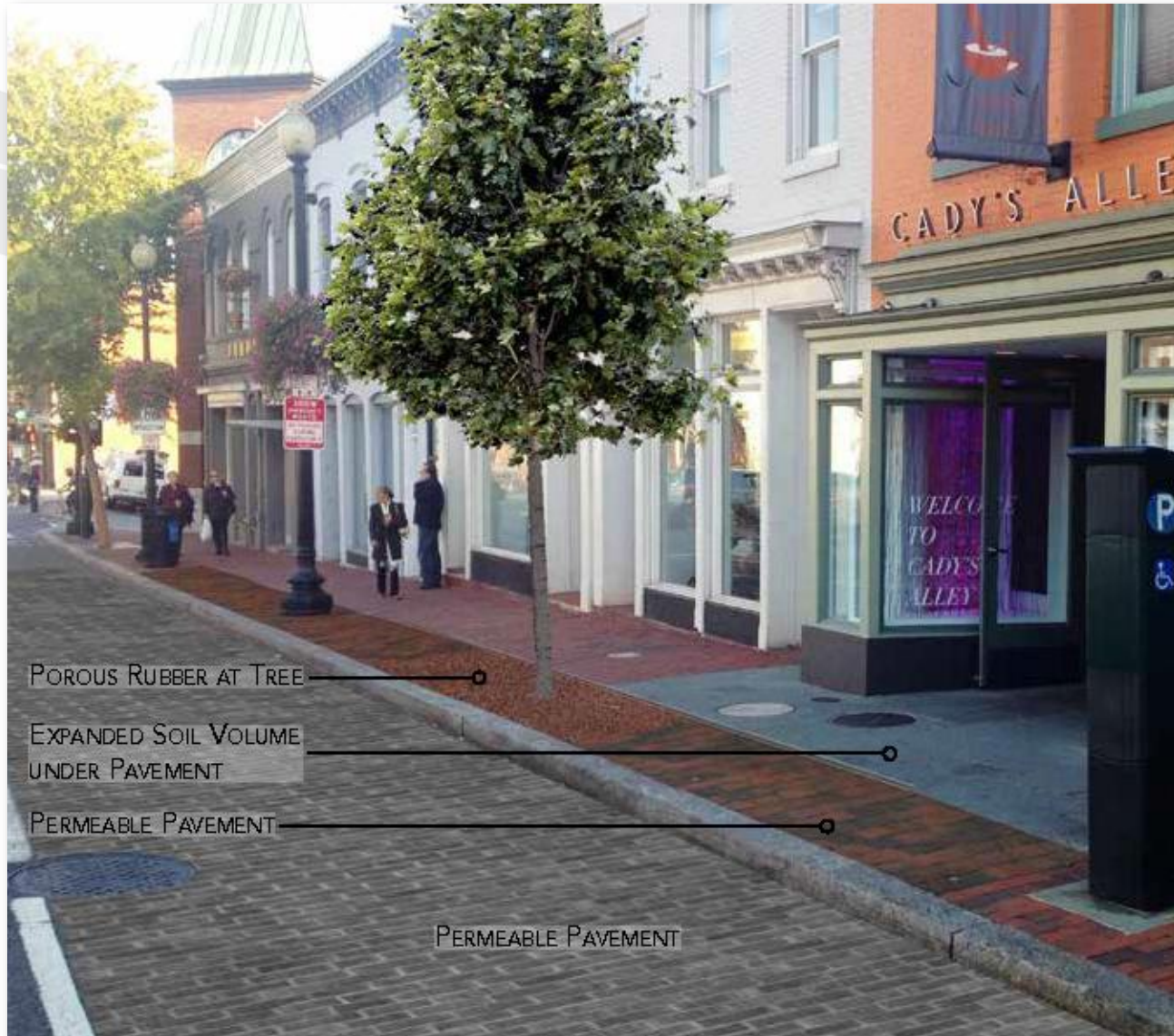
Streetscape Features - Trees



Streetscape Features – Planting



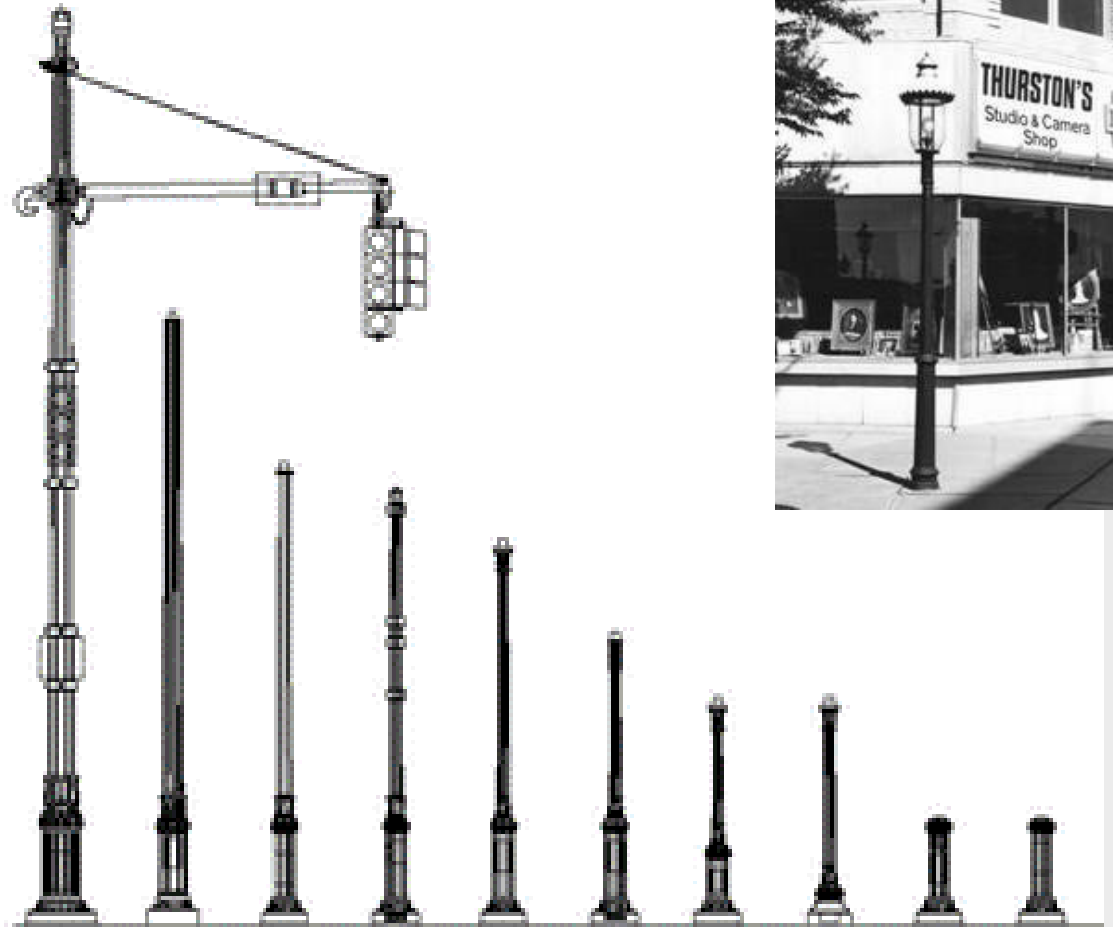
Streetscape Features –Planting



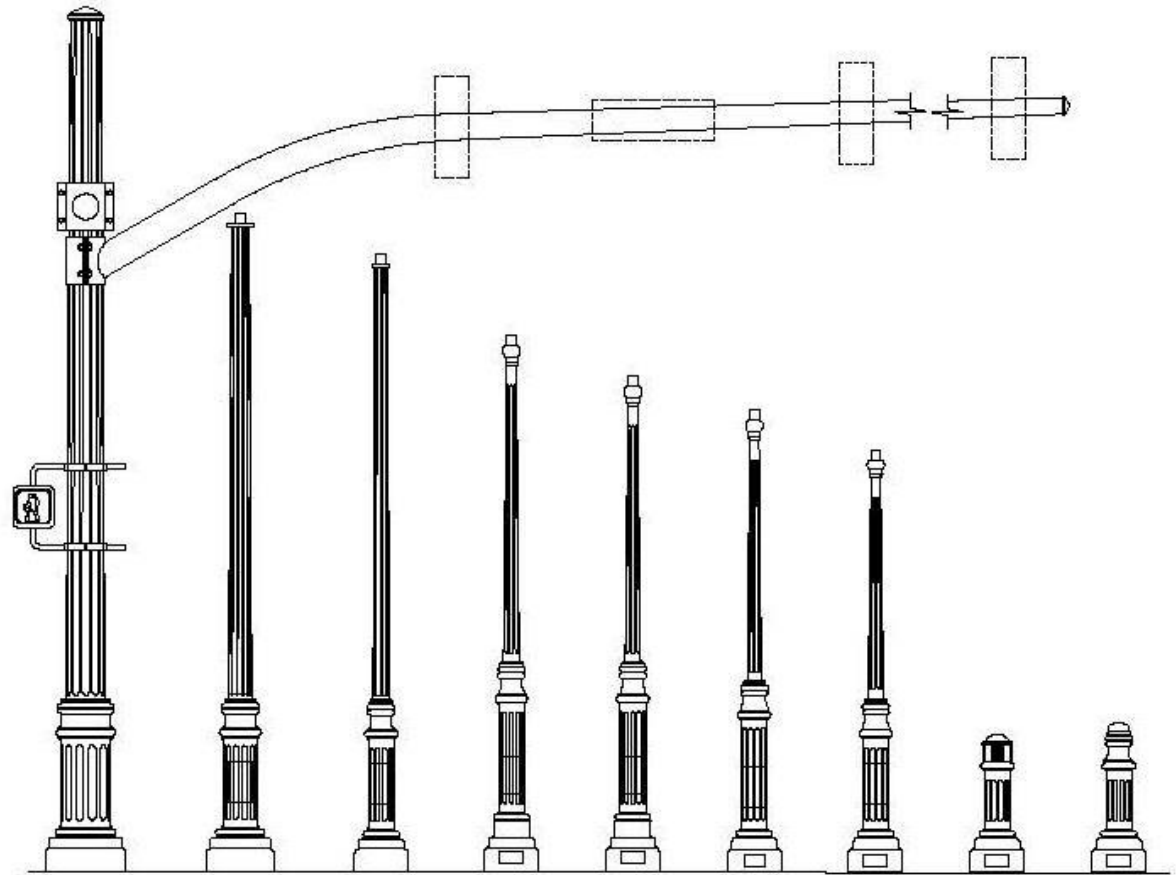
Streetscape Features – Furnishings



Streetscape Features— Lighting



Streetscape Features– Lighting



Streetscape Features– Surface Treatment



Streetscape Features– Water Features



Division Street Plaza

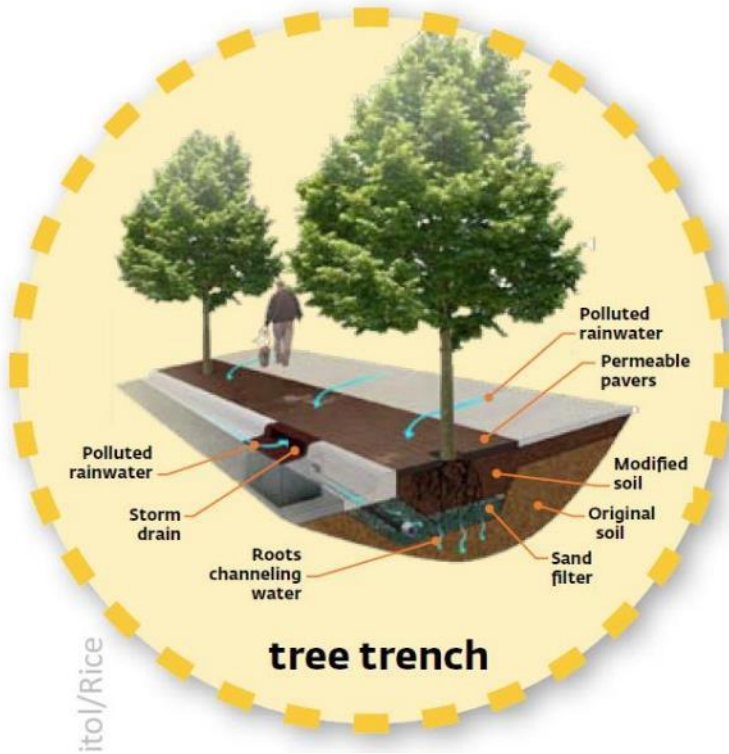


Drainage

- Move / Upgrade inlets
- Inspect System to determine condition of pipes
- Slope roadway to drain
- Eliminate ponding



Stormwater Management



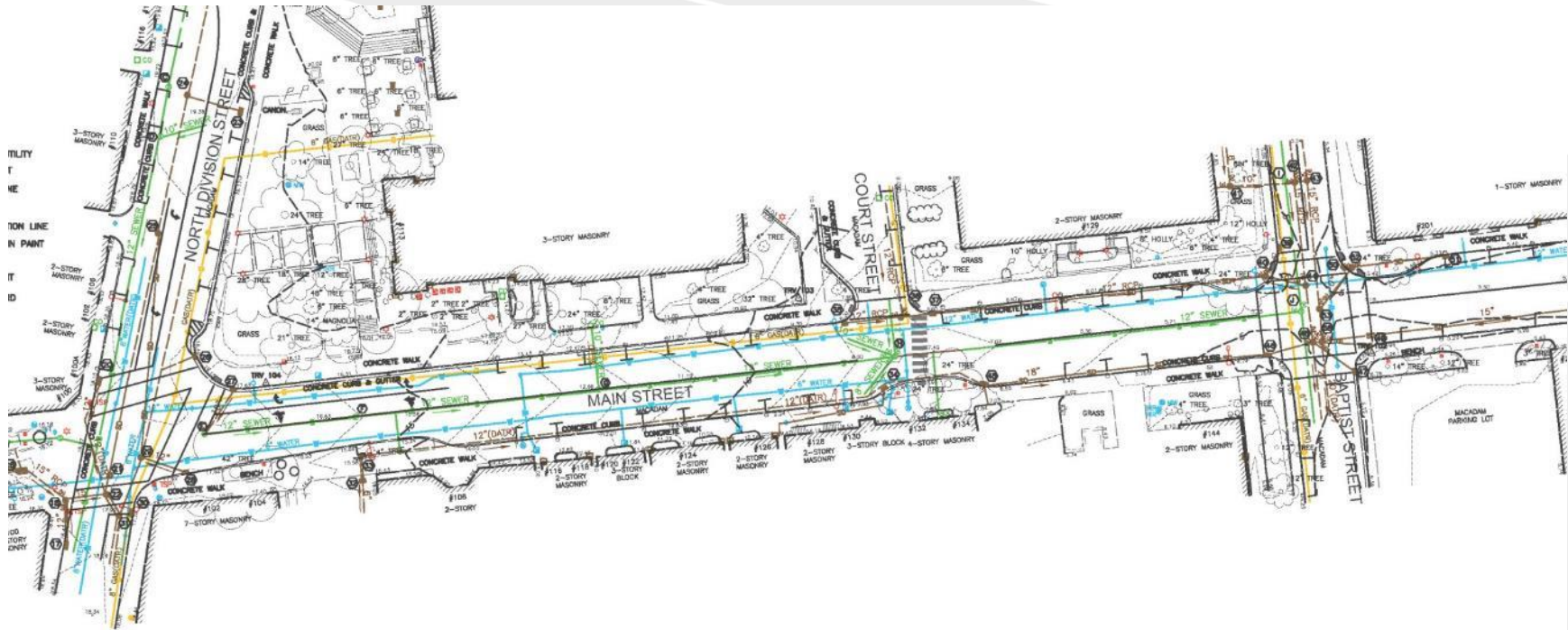
Utilities – Pipe Inspection



Water and Sewer Pipes

PHASE 2 ONLY

- Replace All Water Pipes
- Repair or Replace Sanitary Sewer Pipes
- No disruption of service



Plaza: Main Street and Division Street

- New signal at Division St
- Improve cross walk signing and striping
- Provide pedestrian countdown signals
- Use decorative support posts



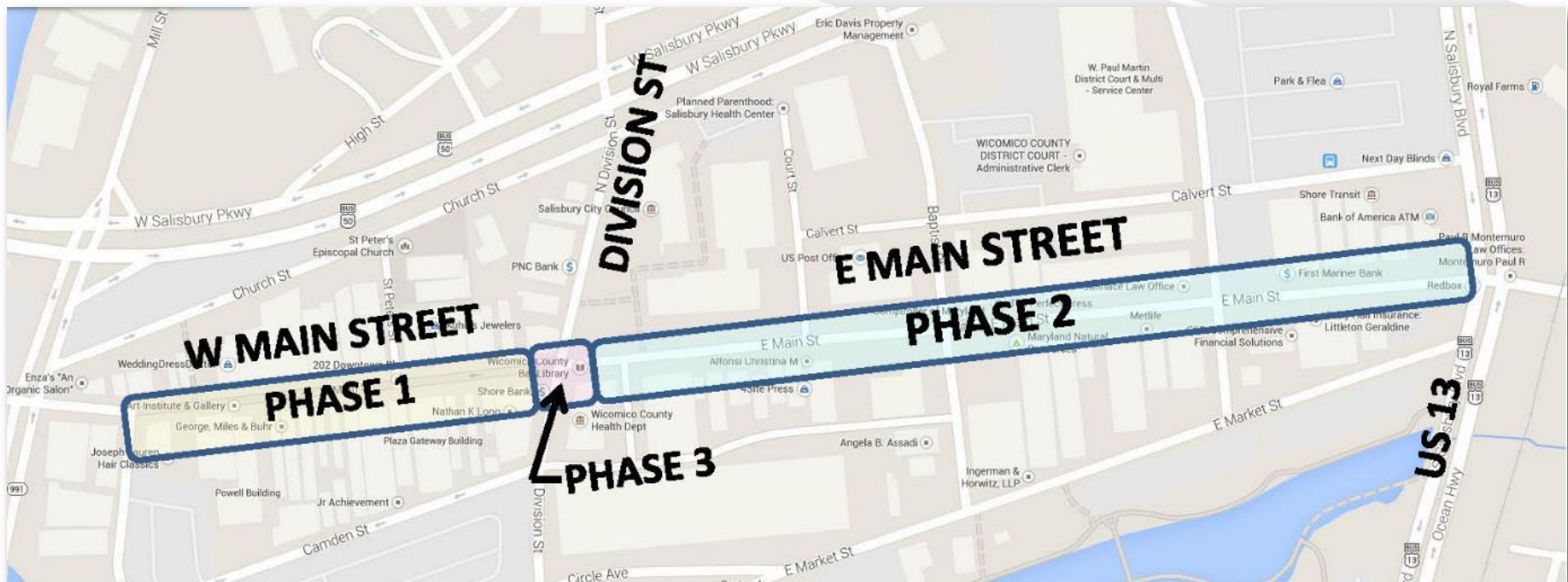
Construction Schedule and Impacts

Expect to begin construction Fall 2015 - phased in this order

- Phase 2: Division St. to Rte. 13
- Phase 1: Market St to Division St.
- Phase 3: Plaza

Construction will:

- Maintain 2 way traffic
- Maintain access to businesses at all times
- Maintain pedestrian access
- Eliminate on-street parking periodically
- Provide advance warning of disruptions



Questions?

